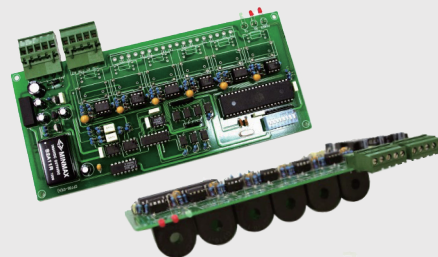


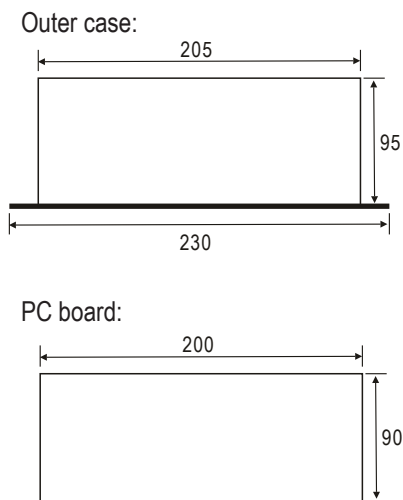
- Input: Hook-type CT(30A,50A,100A) more than 100A can inquire.
- Input: DC4~20mA*2 (customization).
- Output: RS-485.



SPECIFICATION

- ◆ Input : Current**6
- ◆ Range : AC clamp CT 30A or 50A or100A, more than 100A, please negotiate separately.
- ◆ Accuracy : ±1%
- ◆ Operating Temp. : 0~60 / Below 80%R.H.
- ◆ Storage Temp. : -10~70 / Below 70% R.H.
- ◆ Power Supply : DC 24±20%
- ◆ Dielectric Strength : AC 1500V/1min (Input/Power)
- ◆ Insulation Resistance : More than 100M at 500VDC
- ◆ Output : RS-485
- ◆ Protocol : Modbus RTU mode
- ◆ Baudrate : 9600, 19200
- ◆ Frame : N81, N82

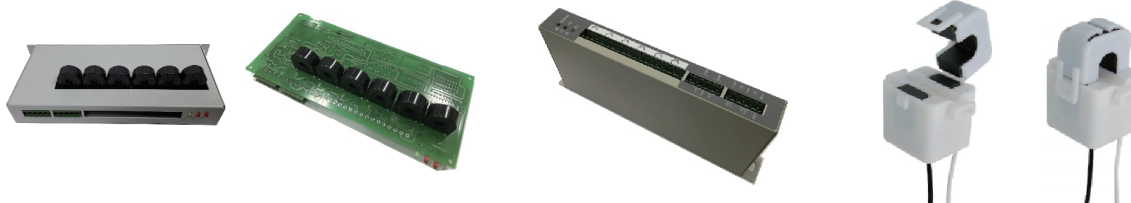
DIMENSION



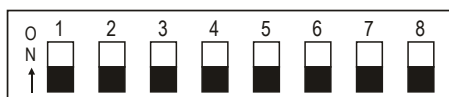
● 6 Current(5A)

● External Hook-type CT

● Hook-type CT(AC clamp): 30A, 50A, 100A



DIP SWITCH



1~6Pin setting address:01~64
 7Pin setting fame:OFF→N.8.1/ ON→N.8.2
 8 Pin setting baud:OFF→9600/ ON→19200
 A/D : 12 bit

WIRING CONNECTION

● 6 split core CT

