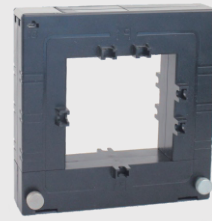


- B-series.(Barrier terminal strips)
- Split Core, easy installation(80mm).
- Primary Input 4000A~6000A.
- Secondary output 5Aac.
- Safe operation.
- Please do not use while the circuit is open.  
Be sure to connect the load device at first.

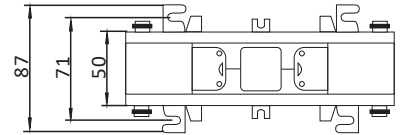
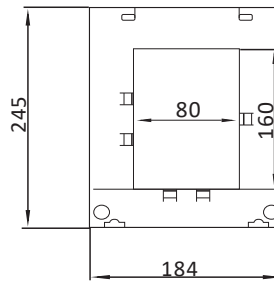


**SPECIFICATION**

- ◆ Frequency: 50~60 Hz
- ◆ Rated Current: 4000A to 6000A loads
- ◆ Rated Output: 5A (AC)
- ◆ Accuracy: Class 0.5 or 1 from 20% to 120% of rated current
- ◆ Phase angle: Less than 2 degrees at 50% of rated current
- ◆ Insulation Voltage: 600 Vac
- ◆ Maximum Primary Voltage: 5000 Vac (Insulated Conductor)
- ◆ Dielectric Strength: 2.5KV/ 1mA/ 1min
- ◆ Operating Temperature: -15°C to 60°C
- ◆ Operating Humidity: <85%
- ◆ Case Material: PC/UL94~V0
- ◆ Bobbin: PBT
- ◆ Core: Permalloy
- ◆ Internal Structure: Epoxy
- ◆ Burden: 4000/ 5A Ø80mm  
5000/ 5A Ø80mm  
6000/ 5A Ø80mm

**DIMENSION**

- Burden: 4000A, 5000A, 6000A



**ORDER INFORMATION**

DCSCT-80B- Code1 - Code2

Code1	Input Signal	Code2	Output
4000	4000 Aac	5	5 Aac
5000	5000 Aac		
6000	6000 Aac		